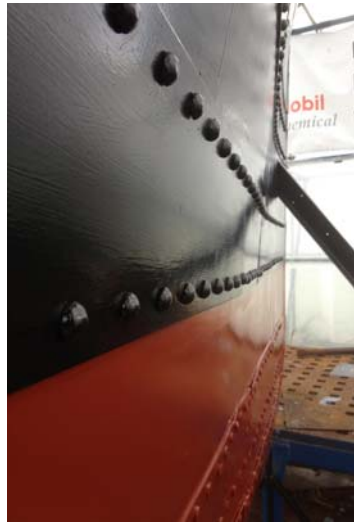


## Quilley School of Engineering, Eastleigh, Hampshire



ICR has forged an educational relationship with The Quilley School of Engineering in Eastleigh, Hampshire. By improving engineering conservation through education ICR has provided corporate sponsorship and technical support for an exciting and innovative engineering project to mark the centenary of the loss of the RMS Titanic on April 15th 1912.

To honor the Southampton residents that were lost during the sinking of Titanic the students are replicating a scale section of the ship's bow using traditional skills and detailed plans secured for the project.

### Client Testimonial

Quilley School of Engineering is a specialist 11-16 school based in Eastleigh, Hampshire. The school prides itself in creating innovative and engaging projects to motivate and enthuse pupils to think and respond as engineers.

Ian Clark Restoration supports the school based on the principal of Engineering Heritage through Education. Ian's support in advising and demonstrating a range of industrial skills and techniques was invaluable in one such project - to replicate to scale the stem section of the RMS Titanic using traditional skills and practices from the Edwardian period circa 1910-12.

Through a master class in 'riveting' pupils were enthralled by the process enabling them to go to locate steel rivets in the structure at working temperatures in excess of 900' Celsius.

Ian's engagement through talks and presentations gave an informed insight into the importance of industrial heritage for future generations.

Attention to detail, getting things right exemplify Ian's approach to his passion.

The school continues to work with Ian and is planning more projects and activities to further the objectives of both Ian Clark restoration and Quilley School of Engineering.

Stephen G Shaw MBA BEd Cert Ed  
Quilley School of Engineering  
August 2012